

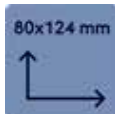
EVOLUTION V80 & V80M

Evolution V80 & Evolution V80M are the latest additions to our Evolution Vision series, offering outstanding visibility and modern design. Featuring the largest viewing area on the market, first-class optical clarity, ultra-high-definition LCD display, and our proven True-Colour technology, they offer an unrivalled welding experience.

The auto-darkening Evolution V80M has numerous additional features such as auto-shade, shade lock, tack mode, fade delay and 2-step-delay. [Experience The Perfect Weld Seam with superior vision.](#)



Customer benefits



Large viewing area – See your weld from any angle and enjoy unlimited possibilities

Designed for welders who demand an extra-large viewing area – perfect for heavy duty applications with high welding speeds and different welding processes. Get the perfect view of your weld from all positions and angles.



Wide shade range with a light open state of 2.5 for unmatched clarity

With a light open state of 2.5, you'll experience unmatched clarity when the ADF is not-active. The ADF's digital back-lighting panel ensures excellent visibility of settings in low-light work areas. The 0.5-step shade adjustment makes your settings even more precise. Use the same helmet for MIG, TIG, stick, plasma cutting and grinding by simply adjusting the shade levels. Leave your helmet on while preparing your workpiece. Enjoy maximum comfort and a seamless workflow.



Great wearing comfort with comfort neck padding

Experience superior wearing comfort with the new headgear, which has been developed for long welding jobs. It features four balance-optimizing straps, and three length-adjustable straps for a customised fit. The advanced neck padding ensures maximum comfort, while the front sweatband adds extra cushioning on the forehead. Enjoy exceptional comfort throughout your working day.



See the Perfect Weld Seam like never before

Improve your colour clarity and natural vision with our True Colour technology with reduced blue light transmission. This allows you to see the arc, workpiece, and the surroundings in a completely natural way. The ADF clarity comes with the highest possible classification V1+TIG in acc. with ISO 16321-2.

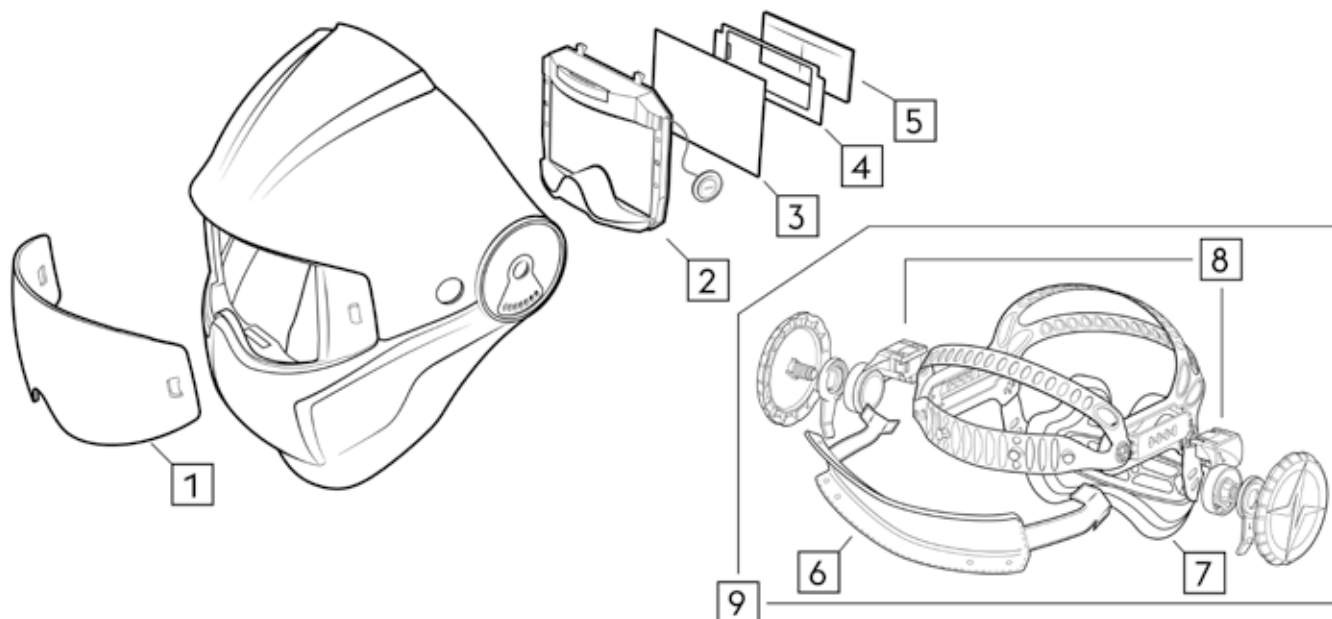


EVOLUTION VISION ADF

Features	Evolution V80	Evolution V80M
Helmet	 	
Open state / Shade range	2.5 / 4-8 / 9-14 (adjustable in 0,5 increments)	
ADF Shade Modes	» External grind mode button	» External grind mode button » Auto-shade (+/-2 individual adjustments) » Shade Lock
Display - Classifications	Ultra-high-definition display - V1 + TIG	
Display Colour	Amber - True colour technology with reduced blue light transmission	
Viewing Area	124 x 80 mm	
Delay functions	» Delay (0.1 - 0.85 sec)	» Delay (0.1 - 0.85 sec) » Tack Mode » 2-Step Delay (2 duration settings) » Fade Delay
Working Temperature Range	-5 °C to +55 °C	
Battery Type / Duration	2 x replaceable CR2450 - 2500 hrs duration	
Arc Sensors	4	4 + 2 auto sensors
ADF on/off	On - button press Standby after 30 mins inactivity OFF - button press	



SPARE PARTS & DELIVERY SCOPE



Spare Parts

No.	Art. No.	Article Name
1	87132	Front Cover Lens
2	89069	ADF Evolution V80
2	89072	ADF Evolution V80M (auto)
*	32517	Battery ADF CR2450
3	89071	Inner Cover Lens
4	89073	Dioptré adapter
5	32444	Dioptré +1,0
5	32445	Dioptré +1,5

No.	Art. No.	Article Name
5	32452	Dioptré +2,0
5	32456	Dioptré +2,5
6	88805	Sweatband
7	89129	Comfort neck padding
8	87796	Hinge Knobs (Set)
9	87134	Headgear - complete
*	87139	Böhler Pouch (black)

Delivery Scope

		Art. No.	MOQ
Evolution V80	» Fully assembled helmet packed in a stylish helmet pouch	89068	1 PCE
Evolution V80M	» incl. 3 front cover lenses		
	» All in a branded box	89070	1 PCE