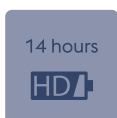


EVOLUTION VISION^{65F / 65FM} AIR KIT

Air-Purifying Respiratory System



Customer benefits



Provides an operating time up to 14 hours



Fast & easy filter change - for an extended protection against harmful gases



For a perfect airflow setting according to your personal needs



For a reliable protection of your respiratory tract



For your constant safety - with a visual, audible and vibrating warning system



Shoulder harness with chest buckle for an ergonomic wearing comfort and an ideal weight distribution

EVOLUTION AIR

99,8 % particle free air

P R SL filter - highest filtration standard - optional use of gas filters (A1B1E1 P R SL)

Pre-filter - filtering larger particles out of the breathing air and extends the particle filter life time

Spark guard & Filter cover protection of the filters from welding sparks

Contaminated air



Evolution Vision^{65F} Air Kit
with Evolution Vision^{65F} Air:

- » ADF: Shade 3, 4-8 / 9-14, 65 x 96 mm
- » UHD display - CE classification 1/1/1/1



Evolution Vision^{65FM} Air Kit
with Evolution Vision^{65FM} Air:

- » ADF: Shade 3, 4-8 / 9-14, 65 x 96 mm
+ **Auto Shade Mode**
- » UHD display - CE classification 1/1/1/1



Evolution Air
(Complete Blower Unit)

Features

- » Particle filter (P R SL) or optional use of gas filters (A1B1E1 P R SL)
- » Standard: EN 12941 protection class TH3 P R SL / TH3 A1B1E1 P R SL in combination with Evolution Vision^{65F/65FM} Air
- » Operating time: Up to 14 h with the heavy-duty battery 7.800 mAh - quick charge, only included in the kit bags Evolution Vision^{65F/65FM} Air Kit
- » Charging time: 3 hours
- » Flow rate 180 - 240 l/min - adjustable at 6 levels
- » Visual, audible and vibrating warning system for insufficient airflow (below 170 l/min) and/or low battery charge
- » Universal quick charger (USB-C port)
- » Weight: 1.120 g (including battery, assembled filter)

Evolution Air Kits		MOQ*	Art.No
Evolution Vision^{65F} Air Kit	Ready to use kit: Evolution Air with Evolution Vision ^{65F} Air welding helmet in a stylish bag. Incl. spares: 2 front cover lenses, 2 grinding visors, 20 pre-filters and 1 spare ADF battery	1 pce	87436
Evolution Vision^{65FM} Air Kit	Ready to use kit: Evolution Air with Evolution Vision ^{65FM} Air welding helmet (with Auto Shade Mode) in a stylish bag. Incl. spares: 2 front cover lenses, 2 grinding visors, 20 pre-filters and 1 spare ADF battery	1 pce	87437
Evolution Air (Complete Blower Unit w/o head top)	Ready to use blower unit including motor unit with assembled particle filters, pre-filters, spark guards and filter covers, flexible air hose, heavy-duty battery (standard), universal charger, comfort belt, shoulder harness and airflow tester	1 pce	77008

* MOQ (Minimum order quantity)

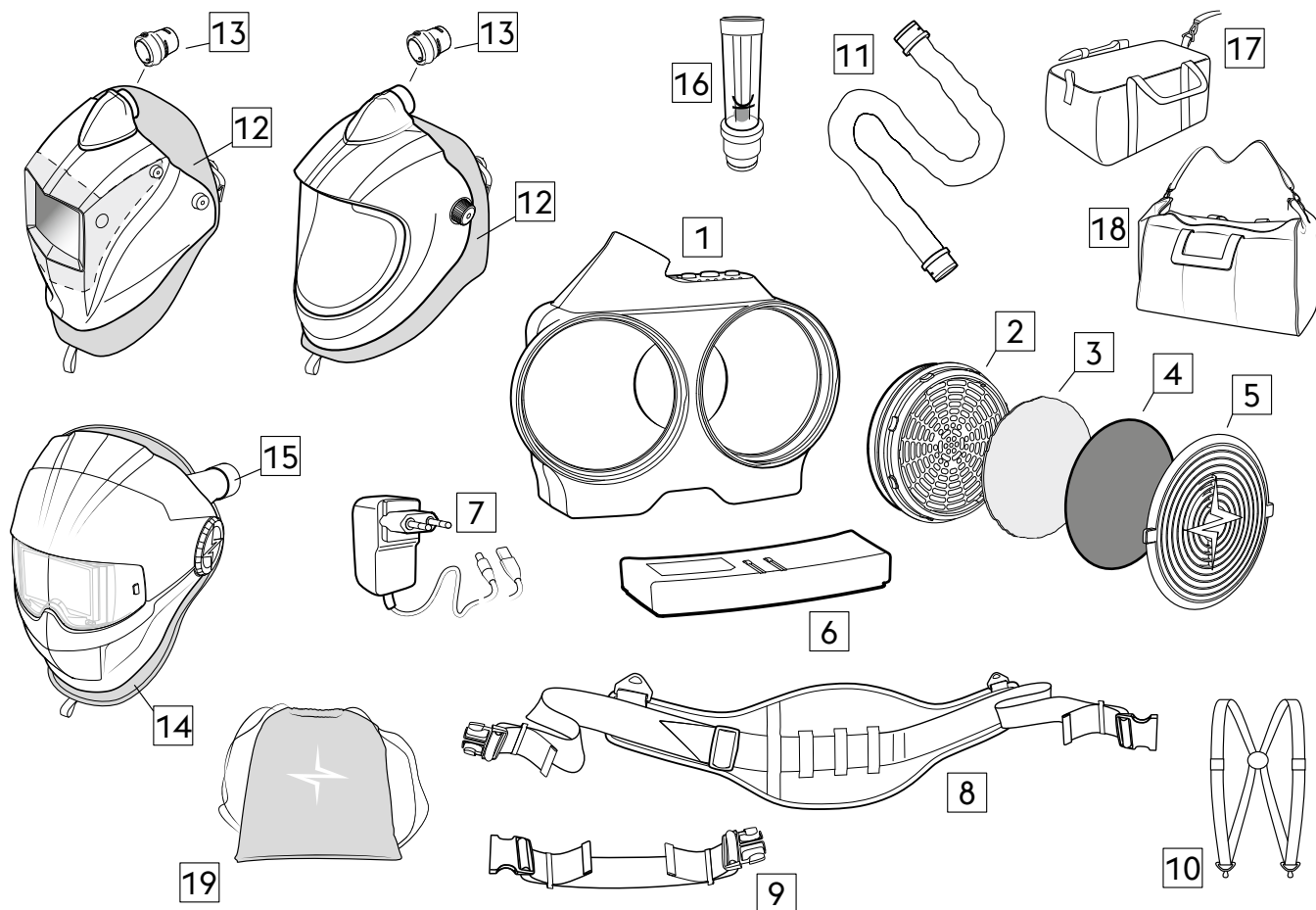
HEADTOPS FOR THE USE WITH EVOLUTION AIR (PAPR SYSTEM)



Main air streams for an optimized clean air supply to the breathing zone

<p>Guardian^{50M} Air - matt blue</p> 	<ul style="list-style-type: none"> » ADF: Shade 4, 9-13 » External shade adjustment knob » External grind mode button » Display: 50 x 100 mm - True Colour » EN 379 classification 1/1/1/2 <p style="text-align: right;">86669</p>	<p>Guardian^{50FM} Air (flip-helmet) - matt blue</p> 	<ul style="list-style-type: none"> » ADF: Shade 4, 5-9/9-13 » Internal grind mode setting » Display: 50 x 100 mm - True Colour » EN 379 classification 1/1/1/2 <p style="text-align: right;">86682</p>
<p>Guardian⁶² Air - glossy blue</p> 	<ul style="list-style-type: none"> » ADF: Shade 4, 5-9/9-13 » External grind mode button » Display: 62 x 98 mm - True Blue Colour » EN 379 classification 1/1/1/2 <p style="text-align: right;">57007</p>	<p>Guardian^{62F} Air (flip-helmet) - glossy blue</p> 	<ul style="list-style-type: none"> » ADF: Shade 4, 5-9/9-13 » Grind mode button » Display: 62 x 98 mm - True Blue Colour » EN 379 classification 1/1/1/2 <p style="text-align: right;">57029</p>
<p>Evolution Vision^{65F} Air (flip-helmet) - glossy blue</p> 	<ul style="list-style-type: none"> » ADF: Shade 3, 4-8/9-14 » UHD-Display: 65 x 96 mm - True Colour » EN 379 classification 1/1/1/1 <p style="text-align: right;">87438</p>	<p>Evolution Vision^{65FM} Air (flip-helmet) - matt blue</p> 	<ul style="list-style-type: none"> » ADF: Shade 3, 4-8/9-14 + Auto-Shade Mode » UHD-Display: 65 x 96 mm - True Colour » EN 379 classification 1/1/1/1 <p style="text-align: right;">87440</p>
<p>Big Vision Air - glossy blue</p> 	<ul style="list-style-type: none"> » Grinding visor » 180 x 160 mm viewing area <p style="text-align: right;">73314</p>		

SPARE PARTS



No.	Description	Art. No.
1	Evolution Air motor unit	77011
2	Particle filter P R SL (4 pieces)	57106
2	Particle filter P R SL (16 pieces)	57120
2	Gas filter A1B1E1 P R SL (2 pieces)	57127
3	Pre-filter (20 pieces)	57097
3	Pre-filter (40 pieces)	57099
3	Odour-pre-filter (6 pieces)	75094
4	Spark guard (2 pieces)	57089
5	Filter cover (2 pieces)	57082
6	Heavy-duty battery (7.800 mAh) - quick charge	87598
6	Heavy-duty battery (7.800 mAh)	57075
6	Standard battery (5.200 mAh)	86660
7	Quick charger - to be used with 87598 - Heavy-duty battery (7.800 mAh) only	87599
7	Universal charger	57081

No.	Description	Art. No.
8	Comfort belt	57144
8	Leather comfort belt	75685
9	Comfort belt extension (265mm)	64255
10	Shoulder harness	57146
11	Flexible air hose (90-125 cm)	57065
11	Standard air hose - non-flexible (100 cm)	64915
12	Face-seal (for all Guardian Air + Big Vision Air)	57182
13	Air duct (for Guardian Air + Big Vision Air)	87143
14	Face-seal (for Evolution Vision Air)	87596
15	Air duct (for Evolution Vision Air)	87441
16	Airflow tester	57184
17	Böhler Bag blue	57186
17	Böhler Bag black	86702
18	Evolution Bag blue	87597
19	Böhler Head top pouch black	87139